



# COP (CELL ON PLATFORM)

## CONSTRUCTION SPECIFICATIONS

- Heavy Gauge Aluminum or Steel as Required
- Powder Coat or Epoxy Finishes
- Stainless Steel and Grade-8 Fasteners Throughout
- Hot-Dipped Galvanized Steel Base Frame
- R4 Rated Double-Sided Foil Insulation
- Stainless Steel Handles and Hardware
- Modular Construction
- Outriggers and Jacks as Required
- Linex® Floor Coating
- Super Heavy Duty Hinges
- Custom Designed Equipment & Battery Racks as Required

## CONFIGURATION SPECIFICATIONS

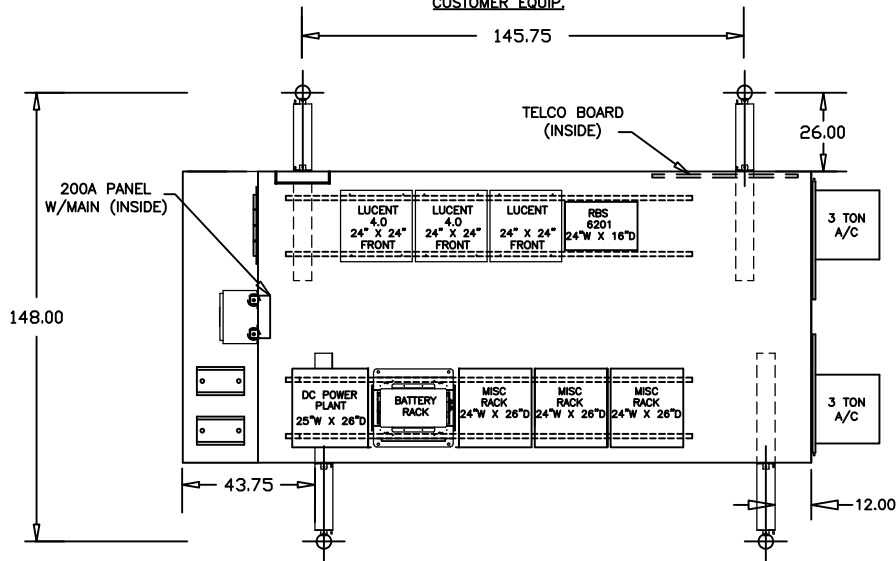
- Custom Designed UL® Listed NEMA 3R Wireless Communications Cabinet
  - 150 MPH Wind Load, 150-lb/sq. ft. Snow Load, 500-lb/sq. ft. Floor Load, Zone-4 Rated
  - Halo Ground Ring, Main Ground Bar (Exterior) Equipment Ground Bar (Interior)
  - Internal & External GFI Service Receptacles
  - 200 AMP 42-Position 1-Phase 3-Wire Distribution Panel
  - Flexible Equipment Mounting Options with Ceiling Mounted Ladder Rack
  - Lightweight Modular Design Provides For On-Site Assembly in Access Restricted Areas Like; Roof Tops, Parking Garages, and Apartment Buildings
  - McLean® HVAC Units with Lead-Lag Controller
  - High & Low Temperature Alarms, Intrusion, Smoke, Surge, & Utility Power Fail Alarms as Required
  - Fire Extinguisher, First-Aid & Eye Wash Kit Mounted on Telco Board
  - Fluorescent or LED lighting as Required
  - Passive Hydrogen Venting
  - White Powder Coat Finish Standard - Custom Colors Available
  - Concealment Solutions Available
- Options/Add-ons:**
- 45' or 60' Pneumatic Mast
  - 20 - 36 Kw 1-Phase, 3-Wire, 120/240 Volt Generator
  - Extended Run Fuel Cell - 24 Hour, 48 hour or As Required



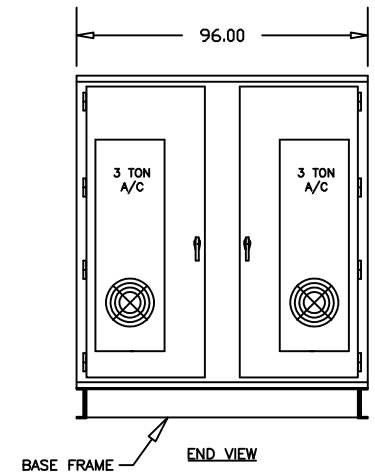
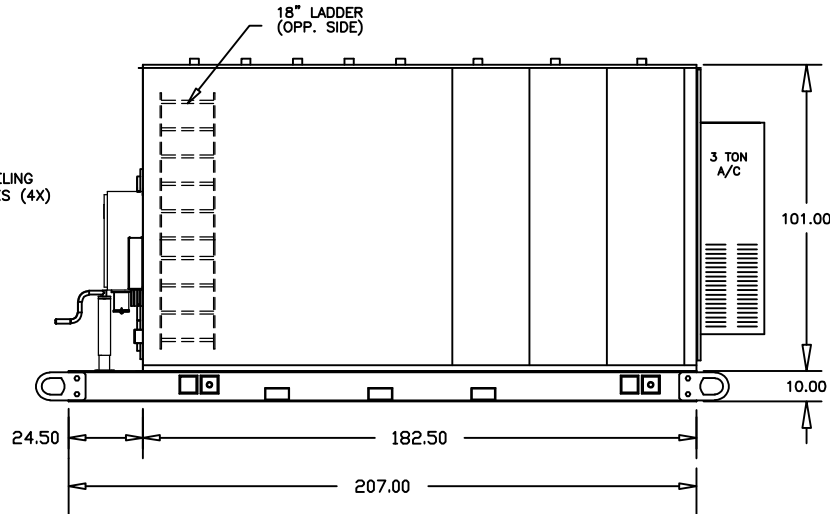
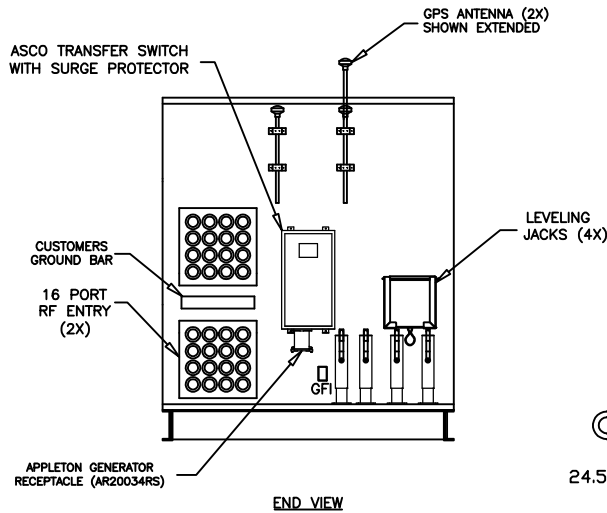
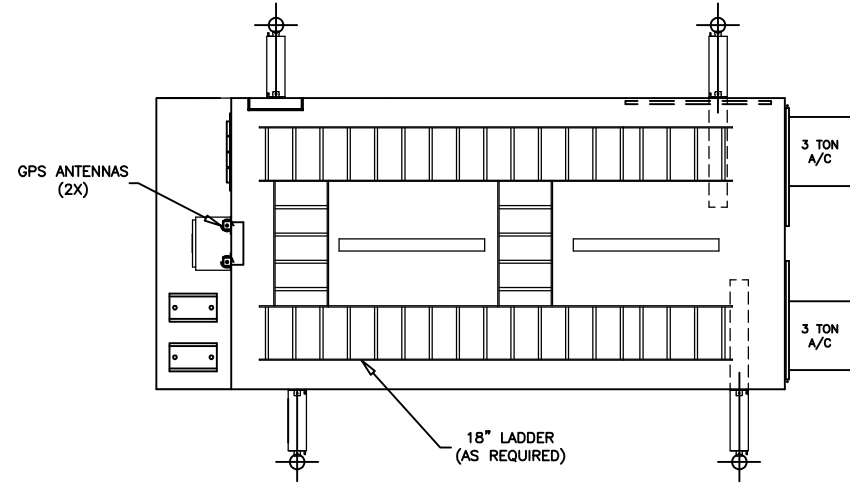


SITE: \_\_\_\_\_

TOP VIEW  
CUSTOMER EQUIP.



TOP VIEW  
ROOF LADDER RACK



PROPRIETARY  
PROPOSAL

\*\* PROPRIETARY AND CONFIDENTIAL \*\*

THIS DOCUMENT AND THE INFORMATION  
HEREIN IS THE SOLE PROPERTY OF  
SUN WEST ENGINEERING INC.  
DUPLICATION OF THIS INFORMATION WITHOUT  
PRIOR CONSENT OF SUN WEST ENGINEERING  
IS FORBIDDEN.



SUN WEST ENGINEERING, INC.  
3802 E. BROADWAY, PHOENIX, AZ 85040 (602) 275-0662

TITLE: "COP"- CELL ON PLATFORM

CUSTOMER:

PLOT SCALE: .XXXX=1 SHEET: 1 of 1

DRAWN BY: *HJM* DATE DRAWN: 2-15-12

REVISED: DWG. No. SW-4013